

**Followers' Footnotes**  
**JULY/AUGUST, 2011**



**Bethlehem Evangelical Lutheran Church**  
**Rev. Andrew D. Nelson, Pastor**  
**Rev. Gregory J. Prauner, Associate Pastor**  
**155 Linwood Avenue, Ridgewood, NJ 07450-2698**  
**Church Office Telephone: (201) 444-3600**  
**Fax: (201) 444-2549**  
[www.bethlehemchurch.com](http://www.bethlehemchurch.com)

The mission of  
Bethlehem Evangelical Lutheran Church  
is to:

*Trust God  
and care for His people  
by sharing the Good News of  
Jesus Christ  
in our world, community, work,  
church, and home.*



**SUMMER WORSHIP SCHEDULE  
ONE SERVICE AT 9:30 A.M.  
THROUGH SUNDAY, SEPTEMBER 11<sup>TH</sup>**

**OUR REGULAR WORSHIP SCHEDULE  
BEGINS SUNDAY, SEPTEMBER 18<sup>TH</sup>**

**Praise Worship at 8:45 a.m.  
Sunday School / Bible Study-10:00 a.m.  
Traditional Worship at 11:00 a.m.**

[www.bethlehemchurch.com](http://www.bethlehemchurch.com)

# JULY EVENTS AT BETHLEHEM!

## SHARING GOD'S WORD

**Japanese in US Culture** - first Wednesday each month at 9:00 am in the Parlor (Sept - June)  
**SAGES Bible Study** - meets Mondays at 10:00 a.m. in the parlor (Sept - June)  
**Confirmation** - every Tuesday at 4:00 p.m. in the parlor (Sept - May)  
**Christ Care Groups** - As scheduled

## 4<sup>TH</sup> OF JULY CHURCH PICNIC



MONDAY, JULY 4<sup>TH</sup> AT 5:30 P.M.

## JOIN US FOR SUMMER BIBLE STUDY "INVERTED"

Led by Pastor Greg & Elizabeth Prauner  
Sunday mornings following our 9:30 a.m.  
worship services  
Every Sunday Through August 7<sup>th</sup>

## SUMMER WORSHIP SCHEDULE

Sunday, June 12<sup>th</sup> through  
Sunday, September 11<sup>th</sup> (Rally Day)  
ONE SERVICE AT 9:30 A.M.

Communion will be served at the 1<sup>st</sup>, 3<sup>rd</sup> & 5<sup>th</sup>  
Sundays of the month.

# AUGUST EVENTS AT BETHLEHEM!

## SHARING GOD'S WORD

**Japanese in US Culture** - first Wednesday each month at 9:00 am in the Parlor (Sept - June)

**SAGES Bible Study** - meets Mondays at 10:00 a.m. in the parlor (Sept - June)

**Confirmation** - every Tuesday at 4:00 p.m. in the parlor (Sept - May)

**Christ Care Groups** - As scheduled

## VACATION BIBLE SCHOOL

**Monday, August 1 - Friday, August 5**

**9:00 a.m. - 12:00 p.m.**

## SUMMER WORSHIP SCHEDULE

**Sunday, June 12<sup>th</sup> through  
Sunday, September 11<sup>th</sup> (Rally Day)  
ONE SERVICE AT 9:30 A.M.**

**Communion will be served at the 1<sup>st</sup>, 3<sup>rd</sup> & 5<sup>th</sup>  
Sundays of the month.**

# PASTOR NELSON'S MESSAGE

## VISION VIEWING

I'm doing my Pastor's Page a little differently this month. Instead of describing our congregation's vision to you I'd like to give you some verbal snapshots or vision pictures of what I've seen over the past couple of months. Here are a few:

1. Patty C. and Beth H. in Home Depot wearing our Women's Ministry shirts and being approached by a brand new Christian of one day exclaiming "God sent you here!" (Excitement follows)
2. Our Sunday School doing "Elijah" on Pentecost. Bulls drenched! Queen Jezebel (Maggie) being, well, Queen Jezebel, Bulls (Clay K) up in flames, wind roaring. Elijah on top of the world! Elijah looking for God. Elijah missing God's Word. Elijah hearing God's Word. Peace. (And does Mike Skorski view himself as a budding playwright?)
3. A bunch of new members and tons of people (oops! - that may be a wrong image). Lots and lots of people worshipping and praising God! Lots of Bethlehemites and BELC families!
4. Twenty "Bethlehemites" passing out 2500 cups of water to lots of families at the Memorial Day Fun Run! Wow! That was wet!
5. Women's Ministry Habitat for Humanity workers scratched, hurting, laughing...and since healed after constructing a retaining wall (yep - that's what I said!) in Paterson 4<sup>th</sup> ward.
6. Bethlehem family - Church and Learning Center flooding the gym (in the sense of "lots of people" - not "water") to help out teacher Doreen Allen's son. We did!

## AND NOW FOR FUTURE VISION VIEWING OPPORTUNITIES!

1. Sandwiches prepared by us but devoured by Mission workers in North Bergen.
2. Over 150 children flooding or over-running (take your pick) our church for VBS! In August. The first week!

3. Ten? Twenty? Thirty? I see lots of Bethlehemites (I kind of like that moniker) in the middle of town at the 4<sup>th</sup> of July parade handing out water (do I sense a Memorial Day repeat?) to lots of hot, perspiring, tired paraders! Are you there in the picture?
4. And now for something completely different!

**AND STILL MORE OPPORTUNITIES  
FOR FUTURE VISION VIEWING!**

I see Small Groups? Do You? Look!

I see members and friends gathering together nine times a year in Groups Aflame! There you are sharing with friends and growing in God's strength around His Word. There you are growing in discipleship. There you are as a group going out into the community to serve in Christ's name in a way you are seen and to His glory. There you are growing up and growing out and seeing Christ at the center of your life! Look for Groups Aflame!

**NOW PICTURE THIS. . .**

Do you see it? I do. Groups of 8-12. Gathered in homes. People asking questions. Neighbors laughing. And in the middle of the group - there He is. The Holy Spirit. Answering questions in love. Neighborhood groups. Seeker groups. Led by...you? Groups of friends, acquaintances, people asking questions, looking for answers, finding out about who Jesus is! Non-members. People Jesus is calling. Seeing Him like you did. Joy.

I see Seeker Group training this summer. By me. 4x - after worship. July 10, 17, 31 and August 7. One hour. See me. Pastor! Learning to lead, to discuss, to invite - I see fun in the process!

Some vision views. But I guess the bottom line is this. What do you see when it comes to God's Vision? I challenge you to do a bit of Vision Viewing from God's perspective.

**WHAT DO YOU SEE? GIVE ME YOUR VISION VIEWS!**

Pastor Andy Nelson



## NEW MEMBERS OF BETHLEHEM

On Sunday, June 12 we "officially" welcomed the following families as members of Bethlehem:

The Chmiel Family; The Coviello Family; The Geho Family;  
The Ho Family; The McGeary Family; The Poggi Family;  
The Schierloh Family

## ELDER ASSIGNMENTS

<u>ELDER NAME</u>	<u>E-MAIL</u>	<u>ASSIGNED FLOCK</u>
Rob Gregory	<a href="mailto:robgre1@aol.com">robgre1@aol.com</a>	A thru B
Larry Cinquegrana	<a href="mailto:lcinquegrana@aol.com">lcinquegrana@aol.com</a>	C thru D
Matt Criscenzo	<a href="mailto:mcriscen@optonline.net">mcriscen@optonline.net</a>	E thru Gq
Charley Krause	<a href="mailto:seedykay@hotmail.com">seedykay@hotmail.com</a>	Gr thru H
Hank Bitten	<a href="mailto:hbitten@optonline.net">hbitten@optonline.net</a>	I thru Ld
George Kennedy	<a href="mailto:gkennedy3@verizon.net">gkennedy3@verizon.net</a>	Le thru Md
Bill Montick	<a href="mailto:WMONTICK@aol.com">WMONTICK@aol.com</a>	Me thru N
Larry Schumann	<a href="mailto:skyclubs@optonline.net">skyclubs@optonline.net</a>	O thru Ri
Zack Wilhoit	<a href="mailto:uwilhoits@yahoo.com">uwilhoits@yahoo.com</a>	Rj thru Si
Ray deTorres	<a href="mailto:rdtjn316@earthlink.net">rdtjn316@earthlink.net</a>	Sj thru V
Tom Cook	<a href="mailto:holmcook@gmail.com">holmcook@gmail.com</a>	W thru Z
Phil Ebeling	<a href="mailto:philebeling@gmail.com">philebeling@gmail.com</a>	All musicians
Terry Shine (Chairman)	<a href="mailto:Tshine4242@aol.com">Tshine4242@aol.com</a>	Elders/Pastors

## **AN EXPLANATION: IMPROVEMENT TO OUR WORSHIP AREA**

I wanted to reach as many as possible to explain a Council/Trustee decision to expand the opportunities for worship at the front of our sanctuary by tastefully making some changes.

The changes would include removal of the choir pews (pews on the organ side were removed 20 years ago) leveling the sunken pew and band areas to the same level as the existing slate floor and providing a surface to those areas that maintains the integrity of the beautiful architecture of the pulpit, lectern, communion rail and altar.

Choir pews would be replaced by choir chairs with 3" thick cushions, lumbar support, a top "cap rail" system similar to the top of a church pew, and an under-seat book rack. Chairs can be interlocked or used singly and stacked when necessary. Cushion colors would fit in with existing color schemes in the chancel area. These are not folding chairs. One catalog lists each chair at \$40.00 each.

The rest of the work would entail improving sound systems, video capability, etc.

This work would serve to make our worship facility more accessible to our growing Early Learning Center children (chapels are held every week for the school), our Sunday School, Youth Group, Vacation Bible School (this year 155 children are signed up so far), and for sacred concerts for what I pray will be expanded choir opportunities (are there more basses and tenors out there?) and would be of great benefit for our Praise Band which could finally "spread out". It would "open the door" to what I hope would be mass choir events.

Much of the work will be done by Bethlehem people and the total cost could be paid through designated funds specifically earmarked for church and sanctuary.

I believe this to be a wonderful opportunity as we approach the 100 year anniversary of Bethlehem and I welcome your comments and questions. Having been here when this sanctuary was built (I have the black & white photos to prove it!) I share your love not just for the beauty of this sanctuary (which will be maintained) but most especially for the worship and joyful praise of our Lord which resounds here each week.

May God's praise continue to fill our hearts and this sanctuary for 100 years to come! - Pastor Nelson



**SAVE THE DATE!**

**Saturday, July 30<sup>th</sup>**

Commissioning for Daniel Koehler to 2<sup>nd</sup> Lt.  
U.S. Marine Corps

Keep the date open. The congregation will  
be invited to attend. Watch the weekly  
bulletin for the time!

\* \* \*

## **THANKS FROM AMERICAN LEGION**

On Behalf of Ridgewood American Legion Post 53, we wish to thank you for sending a wreath to the War Monument for the Memorial Day service. The wreaths are an important element in honoring the heroic men and women in the military who sacrificed their lives to keep us safe and secure. We appreciate your contribution.



**On Monday July 4<sup>th</sup>, Bethlehem will celebrate Independence Day on the lawn of our church. The party starts at 5:30 pm with a bar-be-cue and lasts until after the fireworks.**

**Bring a lawn chair, a salad or dessert, a 6-pack beverage of your choice, and a friend. If you have any questions, call Gretchen Nelson at 201 445 4704.**

## **COMMUNITY THRIFT SHOP**

Thank you for your donations to the Community Thrift Shop! A check for \$188 was received and sent to the victims of the Joplin, MO tornadoes.

The Thrift Shop is located in Midland Park Shopping Center and accepts clothing, shoes, linens, small household items, books, toys, and small furniture. They receive donations every Monday and the first Saturday of the month from 10:00 a.m. to 2:00 p.m.



# PASTOR GREG'S MESSAGE

## View From The Back Pew

“Stop, drop, and roll!” A simple rubric from grade school days is a wealth of wisdom. “Only you can prevent forest fires!” Again, there is a simple truth in this wisdom from Smokey. Why the familiarity of such catch phrases? Fires are to be taken serious at all times, in all places, shapes and sizes. The same holds true as we enter the season of Pentecost.

In Acts Chapter 2 we see the Holy Spirit upon people as they begin to proclaim the mighty works of God. “And suddenly there came from heaven a sound like a mighty rushing wind, and it filled the entire house where they were sitting. And divided tongues as of fire appeared to them and rested on each of them. And they were all filled with the Holy Spirit and began to speak in other tongues as the Spirit gave them utterance.”

The message of the mighty works of God is still important to share. The message and assurance of salvation through Jesus’ death and resurrection still needs to be proclaimed. The message needs to be repeated. Why? There are generations who do not know the valuable lesson. There are people; friends, neighbors, siblings, children, spouses, and parents who do not know the simple rubric of faith applied in their lives.

Pentecost is not a season to be remembered but a life lesson to live out. As Christians, we have information which can save someone’s life. Information to comfort, heal, protect, relieve, and uplift every person regardless of circumstance.

Only you can share the message of salvation! Stop, talk, and pray! A life depends on it!

In His grip,  
Pastor Greg

## PARISH NURSE NOTES



I had the privilege of attending the annual Parish Nurse Conference in Mequon, Wisconsin last month, as well as the Parish Nurse District Representative Meeting. We celebrated the 5<sup>th</sup> birthday of Parish Nursing in Bethlehem, Palestine with our Parish Nurse friend Raeda Mansour from Christmas Lutheran Church

Meals are needed to stock our freezer! At different times throughout the year, our members are in need of a little help due to illness or other situations, and we provide them with a few meals to help get them through. We have a deep freezer to have food on hand to help when it is needed most. Please prepare a meal, and bring it to the parlor freezer in disposable containers. Let me know that it is there, and I will take care of it for the deep freezer. Thank you!

We will continue to collect food throughout the year for Center for Food Action in Mahwah, with donations of non-perishable food items to be placed in the Bethlehem Soup Can. At special times throughout the year, we will have collections for specific items. On Parents Day in June, we collected diapers and food to stock the food pantry for the summer. We'll do a special collection in September on Rally Day, September 11<sup>th</sup>. Thank you for your generosity-so many are still really hurting!!

We hope to offer a Christian Yoga class in the fall! Please let me know if you are interested so a day and time can be chosen!

My work days are now Wednesdays and Thursdays to coordinate with staff meetings.

Summer is here!! Time for a break, some R&R at the beach, maybe?? Walking on sand or soft dirt boosts your energy expenditure by as much as a third. It also exercises more of the muscles in the foot, especially if you are walking barefoot! I always notice it in my calves! Be careful of sharp objects while walking barefoot, however, such as broken shells, glass, etc.

Have a blessed summer!  
Blessings,  
Patty Criscenzo, RN, FCN  
Parish Nurse X-205



## WHEN WAS THE LAST TIME YOU HAD A *FINANCIAL* CHECKUP?

Your finances need regular checkups just as your body does.

Most financial professionals recommend you get a financial checkup at least once a year. The experienced and knowledgeable financial representatives at Thrivent Financial for Lutherans can help.

Thrivent Financial offers simple ways to deal with changes in your life that naturally lead to changes in your financial needs. For example, if you have a new grandchild, money you invested in a CD two years ago may now make more sense in a college savings plan. Or a recent job promotion may mean it's finally time to start saving for retirement.

For a financial checkup or to discuss how Thrivent Financial can help you achieve your financial goals, contact William O'Doherty, FIC, at 1-800-838-1159 or [William.odoherty@thrivent.com](mailto:William.odoherty@thrivent.com) today, or visit [Thrivent.com](http://Thrivent.com).

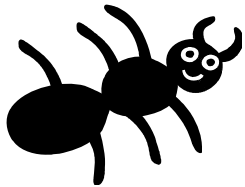
Insurance products issued or offered by Thrivent Financial for Lutherans, Appleton, WI. Not all products are available in all states. *Securities and investment advisory services are offered through Thrivent Investment Management Inc., 625 Fourth Ave. S., Minneapolis, MN 55415, a [FINRA](#) and [SIPC](#) member and a wholly owned subsidiary of Thrivent Financial for Lutherans.*

For additional important disclosure information, please visit [Thrivent.com/disclosures](http://Thrivent.com/disclosures).

# Bethlehem Early Learning Center

Our Closing Program concluded our 2010-2011 school year, and we sadly said good bye to our children who are now moving to Kindergarten. We will miss them so much!

Now that summer is finally here, we are looking forward to the “Fun” that awaits us at “**Camp Son-Light**”. We will have outdoor games, arts and crafts, Bible stories, and weekly specials such as **Outraghiss Pets**, and music.



Camp starts Tuesday, June 21 and runs through July 22. We currently have 65 children enrolled, and still have availability. Please sign up now if you haven't done so already.

Enjoy the summer!

Mrs. Beth Hasbrouck, Director



## WOMEN'S MINISTRY

### IN THE SPOTLIGHT.....CAROLYN IRONSIDE

**CAROLYN IRONSIDE** has two daughters, Barbara (lives in Ridgewood, NJ), and Claudette (lives in Waco, TX), and one son, Fred (lives in Odessa, TX). She has 12 grandchildren and 8 great-grandchildren. **CAROLYN** was born in Rhode Island, married and lived in New Mexico, and in retirement has lived in Texas and New Jersey. She is presently living with her daughter, Barbara. **CAROLYN'S** hobbies include reading, gardening, tennis and quilting. Her small business, Santa Fe Blues, enables her to make quilts from T-shirts and blue jeans. **CAROLYN** has a double major in English/History and taught for many years in the public schools and at Concordia H.S. in TX.

**CAROLYN** has been a member here at Bethlehem for four great years. She enjoys the friendliness of the people and has always felt welcomed here. She believes in order to grow in faith one must get involved. **CAROLYN** is involved! She is involved in ChristCare, Bible Study, Choir, Altar Guild, Women's Ministry, Women's Book Club, Human Care and she volunteers at the Thrift Shop. It's always a pleasure to see **CAROLYN'S** smiling face on Monday mornings as she comes to Bethlehem for SAGES Bible Study.

**CAROLYN'S** favorite Bible verses are: 1 Corinthians 13:8 - *Love never fails.* (She had this verse on her desk for 41½ years!) and 1 Corinthians 13:13 - *And now these three remain: faith, hope and love. But the greatest of these is love.* Having faith in Jesus Christ is her comfort and strength to continue to live and grow.

Something we did not know about **CAROLYN** is that she was married in a Unitarian Church and she & her husband raised their children in a Presbyterian church. We are blessed to know **CAROLYN** and have her as our Christian sister.

## A NOTE FROM RUTH & TOM OLSEN

After 51 years, how we miss you and think of you often, our Bethlehem family. We leave behind wonderful memories and thanks for 4 baptisms, 4 confirmations, both daughters' weddings and many scriptural sermons, social hours and strong youth programs.

Pastors, vicars and church staff have endeared our children to our Lutheran Church. Esther writes daily prayer suggestions for her monthly church newsletter; Matthew now sings in the choir; Daniel teaches Sunday School and Martha is council representative for her children's nursery school. Special thanks to Bethlehem for its strong youth program.

Tom and I are now at Our Savior Lutheran Church in Rehoboth Beach and are receiving mail at our retirement home at:

17030 Cadbury Circle, Apt. 206  
Lewes, DE 19958

This is a resort area, so plan to get in touch if you are nearby.  
Phone number: 302-645-8942 or Cell: 201-661-3043



### NEWSLETTER ARTICLES

Articles for our next September/October NEWSLETTER are due in the church office on SUNDAY AUGUST 7<sup>TH</sup>, 2011. Please e-mail your article to: [blcsecretary@earthlink.net](mailto:blcsecretary@earthlink.net)

### LIFE NEWS FOR JULY/AUGUST

LIFE QUOTES FROM LUTHERANS FOR LIFE:

• "Stand beside and help that single mother. Stand beside and help those with special needs. Stand beside and help those caring for an Alzheimer's patient. And, beloved Church, for which our Savior died, please faithfully teach the full council of God, so much of which is anchored in the doctrine of the sanctity of human life." *Rev. Don Richman, Lutherans for Life International Representative*

• "Jesus cares for life at all stages: we are called to do the same." *Rev. Kevin Kritzer, Bethany Lutheran Church, Long Beach, California*

• "In our sinful world, conception has become only a biological process that we think we can control. We think adding children to a family is up to us - or is the result of an accident. If we are to be truly pro-life, we must witness to the fact that every conception is a gift from God." *Karen Frohwein, President of LFL of Iowa*

• "We must continue to do all we can to bring an end to the darkness of abortion. We need to reach out in compassion to those experiencing a crisis pregnancy so they do not enter that darkness. In the meantime, we must continue to be the welcoming hands of Jesus extended to those trapped in the darkness of their sin." *Rev. Dr. James I. Lamb, executive director of Lutherans for Life*

• "Maybe you've had an abortion and don't think that God can ever forgive you. You're wrong. Jesus suffered on the cross for ALL your sins and all MY sins. Pray to the Lord and ask for His forgiveness (Colossians 2:13). You can also call Word of Hope at 888-217-8679." *Kay L. Meyer, Director of development for Lutherans for Life*

• "If you have influenced someone to have an abortion or have had one yourself, if you repent, confess this as sin, and bring it to the cross of our Lord Jesus Christ, that sin is forgiven. Believe that 'the blood of Jesus His Son cleanses us from all sin' (1 John 1:7)." *Rev. Don Richman, International Representative for Lutherans for Life*

Thank you for all who participated in this year's Baby Bottle Campaign to benefit Lighthouse Pregnancy Resource Center. Once the totals are in, I'll announce them in a future Sunday bulletin.

- Judi Ruud

## CONGREGATIONAL OFFICERS FOR 2011

**PRESIDENT** – Mike Skorski

**VICE PRESIDENT** – Phil Ebeling

**RECORDING SECRETARY** – Georgia Shine

**TREASURER** - Lawrence Cinquegrana

**ASSISTANT TREASURER:** Matt Criscenzo

**FINANCIAL SECRETARY** - Kathy Murray

**HEAD TELLER** – John Krause

**CONTROLLER** – Dave Rinderknecht

**SUNDAY SCHOOL SUPERINTENDENT** - Mike Skorski

**CHAIRPERSON, STEWARDSHIP COMMITTEE** - Dan Cunneen

**MINISTER OF EDUCATION** – Karen Koromhas

**STAFF COORDINATOR, OUTREACH COMMITTEE** – Pastor Gregory Prauner

**HUMAN CARE STAFF COORDINATOR** – Patty Criscenzo

**DIRECTOR OF ASSIMILATION** – Larry Schumann

### BOARD OF ELDERS

Terry Shine, Chairperson	Phil Ebeling
Hank Bitten	Robert Gregory
Lawrence Cinquegrana	George Kennedy
Tom Cook	Charley Krause
Matthew Criscenzo	William Montick
Ray deTorres	Zachary Wilhoit

### BOARD OF TRUSTEES

John Zulauf, Chairperson	
Bob Borell, Sexton/Facilities Manager	
Marilyn deTorres	Susan Zulauf
Mike Eng	Jerry Roland
Geoff Keehn	Kris Hasbrouck
	Lloyd Chapman

### BOARD OF DEACONS

Karin Baumuller	Cheryl Gurick
Lynn Bednarz	Nina Hall
Elaine Bitten	Nadine Lisecki
Kathy Brecher	Mark Murray
Monika Codner	Janelle Rolfes
Gail Cohen	Steve Rolfes
Tom Cook	William Rusterholz*
Ray deTorres	Gerry Ruud
Marilyn deTorres	Doug Stelling*
Ron Gaglione	Russell Vizzi
Cathy Gaglione	Sue Wilhoit
Leon Greff	Susan Zulauf*

### AV

Steve Rolfes	Larry Schumann	Steve Gonzenbach
Jeremiah Koehler	Benjamin Koehler	Laura & Ryan Higgins
Russ Vizzi	Kris Hasbrouck	Geoff Keehn

### POWER POINT

Kyle Criscenzo	Ian Evans	Mayumi Skorski
Gabriel Keehn	Katie Panagiotou	Paul Skorski
Porter Keehn	Brendan Cherrey	Matt Benjamin
Sean Cunneen		

### AUDITING COMMITTEE

Hank Bitten, Chairperson  
Nadine Lisecki, Adelaide Wolfanger, Carla Cherrey, Greg Matthews

Family Devotional Calendar – July 2011

SUNDAY	MONDAY	TUESDAY	WEDNESDAY	THURSDAY	FRIDAY	SATURDAY
<b>GOD'S DAY</b>  SEE YOU IN CHURCH!					Read Mark 1:9-12 Jesus' baptism  Talk about the day you were baptized  1	Read Mark 1:13-20 The first disciples  Pray for missionaries around the world  2
<b>GOD'S DAY</b>  SEE YOU IN CHURCH!	Read Mark 1: 29-39 Jesus heals many  Pray for your doctor  4	Read Mark 1: 40-45 The man with leprosy  Pray for people in the hospital  5	Read Mark 2:1-12 The paralyzed man  Pray for people in nursing homes  6	Read Mark 2:13-17 Levi  Pray for our government leaders  7	Read Mark 2:23-28 Lord of the Sabbath  What does it mean to keep the Sabbath holy?  8	Read Mark 3: 13-19 12 disciples  Pray for your Sunday School teacher  9
<b>GOD'S DAY</b>  SEE YOU IN CHURCH!	Read Mark 4: 1-20 Parable of the sower  Plant a seed in good soil  11	Read Mark 4:26-34 Mustard seed  Do an act of kindness today  12	Read Mark 4:35-41 Calming the storm  Pray for people who are experiencing bad weather today  13	Read Mark 5:21-43 Heals the sick girl  Send a get well card to someone  14	Read Mark 6: 30-44 Feeding 5000  Pray for people who do not have enough to eat  15	Read Mark 6: 45-56 Walking on water  Tell someone that Jesus loves them  16
<b>GOD'S DAY</b>  SEE YOU IN CHURCH!	Read Mark 7: 24-30 Syrophenician woman  Pray for the people who live in Syria  18	Read Mark 7:31-37 Deaf & mute man  Thank God that you can see and hear  19	Read Mark 8: 1-13 Feeding 4000  Buy a can of food to bring to church Sunday  20	Read Mark 8: 22-26 Healing the blind  Pray for the Lutheran Braille workers at BLC  21	Read Mark 8: 27-30 Peter's confession  What does Christ mean?  22	Read Mark 9: 2-13 The Transfiguration  Who were Moses and Elijah?  23
<b>GOD'S DAY</b>  SEE YOU IN CHURCH!	Read Mark 9: 14-29 Boy with the evil spirit  Pray for people who are sad or lonely today  25	Read Mark 9: 33-37 Who is the greatest?  Pray for the children in your family  26	Read Mark 10: 13-16 Jesus and Kids  Pray for your mom/dad  27	Read Mark 10: 17-31 Rich Young man  Pray for the kids coming to VBS next week  28	Read Mark 10: 46-52 Blind Bartimaeus  Pray for grandparents  29	Read Mark 11:1-11 Palm Sunday  March around, wave your palms and shout Hosanna!  30

Family Devotional Calendar – August 2011

SUNDAY	MONDAY	TUESDAY	WEDNESDAY	THURSDAY	FRIDAY	SATURDAY
<b>GOD'S DAY</b> SEE YOU IN CHURCH! 1	Read Mark 11: 12-19 Clearing the temple Pray for VBS teachers 2	Read Mark 12:1-12 Parable of the tenants Pray for VBS children 3	Read Mark 12:13-17 Paying Taxes Pray for President Obama and family 4	Read Mark 12:28-34 The greatest commandment Make a valentine card for someone today 5	Read Mark 12: 41-44 The widow's offering Pray for widows 6	Read Luke 2:1-20 Birth of Jesus Sing Happy Birthday Jesus! 7
<b>GOD'S DAY</b> SEE YOU IN CHURCH! 8	Read Matthew 1:18- 2:12 The Wisemen visit Jesus Hug someone today 9	Read Luke 2: 41-52 Jesus as a boy Look at pictures of yourself when you were younger 10	Read Luke 5: 12-16 Man with leprosy Pray for your mail carrier. Tell him/her that you prayed for them 11	Read Luke 6: 46-49 Wise/Foolish Builders Pray for Pastor Greg, Elizabeth, Theodore and Lucy Prauner 12	Read Luke 7: 11-17 Widow's Son Pray for Pastor Nelson and Gretchen 13	Read Matthew 6:9-15 Lord's Prayer Pray the Lord's Prayer together 14
<b>GOD'S DAY</b> SEE YOU IN CHURCH! 15	Read Luke 10: 30-37 The Good Samaritan Do something kind for someone today 16	Read Mark 14: 1-11 Anointed at Bethany Pray for our nursery school teachers and staff 17	Read Mark 14: 12-26 The Lord's Supper Pray for Nurse Patty Criscenzo and family 18	Read Mark 14: 32-42 Gethsemane Pray together outside in your garden 19	Read Mark 14: 43-51 Jesus arrested Pray for people in jail 20	Read Mark 14:66 -72 Peter disowns Jesus Say "I love you" to 3 different people today 21
<b>GOD'S DAY</b> SEE YOU IN CHURCH! 22	Read Mark 15: 1-15 Before Pontius Pilate Pray for police officers 23	Read Mark 15: 21-32 The Crucifixion Say "I forgive you" to someone today 24	Read Mark 15:33-41 Death of Jesus Thank God for someone you know who has died 25	Read Mark 16: 1-8 The Resurrection Pray for people who don't know Jesus 26	Read Mark 16: 9-20 The Resurrection Pray for Minister of Education Karen Koromhas 27	Read Matthew 28: 16-20 The Ascension Thank God for sending Jesus to be our Savior 28
<b>GOD'S DAY</b> SEE YOU IN CHURCH! 29	Read Acts 1: 1-11 The Ascension Pray for someone who lives far away from you 30	Read Acts 2:1-13 Pentecost Learn how to say "Jesus loves you" in a different language 31	Read John 10:11-18 Good Shepherd Pray for your new teacher in school 32			

# JULY 2011

Sunday	Monday	Tuesday	Wednesday	Thursday	Friday	Saturday
<b>26</b> <b>9:30 AM</b> Worship Service <b>10:30 AM</b> "Inverted" Bible Study (FH) <b>10:30 AM</b> Congregational Mtg.	<b>27</b>	<b>28</b> <b>9:30 AM - 12:30 PM</b> Camp SonLight (G,FH)	<b>29</b> <b>9:30 AM - 12:30 PM</b> Camp SonLight (G,FH)	<b>30</b> <b>9:30 AM - 12:30 PM</b> Camp SonLight (G,FH) <b>10:00 AM</b> Braille <b>1:00 PM - 3:00 PM</b> Quilting (P) <b>8:00 PM - 10:00 PM</b> Bethlehem Basketball (G)	<b>1</b> <b>9:30 AM - 12:30 PM</b> Camp SonLight (G,FH)	<b>2</b> <b>7:15 AM - 9:00 AM</b> Men's ChristCare (P)
<b>3</b> <b>9:30 AM</b> Worship w/Communion <b>10:30 AM</b> "Inverted" Bible Study (FH)	<b>4</b> Church Office Closed <b>INDEPENDENCE DAY</b> <b>5:30 PM</b> 4th of July Church Barbeque	<b>5</b> <b>9:30 AM - 12:30 PM</b> Camp SonLight (G,FH)	<b>6</b> <b>9:30 AM - 12:30 PM</b> Camp SonLight (G,FH)	<b>7</b> <b>9:30 AM - 12:30 PM</b> Camp SonLight (G,FH) <b>10:00 AM</b> Braille <b>1:00 PM - 3:00 PM</b> Quilting (P) <b>8:00 PM - 10:00 PM</b> Bethlehem Basketball (G)	<b>8</b> <b>9:30 AM - 12:30 PM</b> Camp SonLight (G,FH)	<b>9</b> <b>7:15 AM - 9:00 AM</b> Men's ChristCare (P)
<b>10</b> <b>9:30 AM</b> Worship Service <b>10:30 AM</b> "Inverted" Bible Study (FH)	<b>11</b>	<b>12</b> <b>9:30 AM - 12:30 PM</b> Camp SonLight (G,FH) <b>7:30 PM</b> Church Council (P)	<b>13</b> <b>9:30 AM - 12:30 PM</b> Camp SonLight (G,FH)	<b>14</b> <b>9:30 AM - 12:30 PM</b> Camp SonLight (G,FH) <b>10:00 AM</b> Braille <b>1:00 PM - 3:00 PM</b> Quilting (P) <b>8:00 PM - 10:00 PM</b> Bethlehem Basketball (G)	<b>15</b> <b>9:30 AM - 12:30 PM</b> Camp SonLight (G,FH)	<b>16</b> <b>7:15 AM - 9:00 AM</b> Men's ChristCare (P)
<b>17</b> <b>9:30 AM</b> Worship w/Communion <b>10:30 AM</b> "Inverted" Bible Study (FH)	<b>18</b> <b>7:30 PM</b> 100th Anniversary Committee Mtg	<b>19</b> <b>9:30 AM - 12:30 PM</b> Camp SonLight (G,FH)	<b>20</b> <b>9:30 AM - 12:30 PM</b> Camp SonLight (G,FH)	<b>21</b> <b>9:30 AM - 12:30 PM</b> Camp SonLight (G,FH) <b>10:00 AM</b> Braille <b>1:00 PM - 3:00 PM</b> Quilting (P) <b>8:00 PM - 10:00 PM</b> Bethlehem Basketball (G)	<b>22</b> <b>9:30 AM - 12:30 PM</b> Camp SonLight (G,FH)	<b>23</b> <b>7:15 AM - 9:00 AM</b> Men's ChristCare (P)
<b>24</b> <b>9:30 AM</b> Worship Service <b>10:30 AM</b> "Inverted" Bible Study (FH)	<b>25</b>	<b>26</b>	<b>27</b>	<b>28</b> <b>10:00 AM</b> Braille <b>1:00 PM - 3:00 PM</b> Quilting (P) <b>8:00 PM - 10:00 PM</b> Bethlehem Basketball (G)	<b>29</b>	<b>30</b> Koehler/Commissioning Ceremony (P) <b>7:15 AM - 9:00 AM</b> Men's ChristCare (P)
<b>31</b> <b>9:30 AM</b> Worship w/Communion <b>10:30 AM</b> "Inverted" Bible Study (FH)	<b>1</b> <b>9:00 AM - 12:00 PM</b> Vacation Bible School	<b>2</b> <b>9:00 AM - 12:00 PM</b> Vacation Bible School <b>7:30 PM</b> Elder's Mtg. (P)	<b>3</b> <b>9:00 AM - 12:00 PM</b> Vacation Bible School	<b>4</b> <b>9:00 AM - 12:00 PM</b> Vacation Bible School <b>10:00 AM</b> Braille <b>1:00 PM - 3:00 PM</b> Quilting (P) <b>8:00 PM - 10:00 PM</b> Bethlehem Basketball (G)	<b>5</b> <b>9:00 AM - 12:00 PM</b> Vacation Bible School	<b>6</b> <b>7:15 AM - 9:00 AM</b> Men's ChristCare (P)

# AUGUST 2011

Sunday	Monday	Tuesday	Wednesday	Thursday	Friday	Saturday
<b>31</b> <b>9:30 AM</b> Worship w/Communion <b>10:30 AM</b> "Inverted" Bible Study (FH)	<b>1</b> <b>9:00 AM - 12:00</b> <b>PM</b> Vacation Bible School	<b>2</b> <b>9:00 AM - 12:00</b> <b>PM</b> Vacation Bible School <b>7:30 PM</b> Elder's Mtg. (P)	<b>3</b> <b>9:00 AM - 12:00</b> <b>PM</b> Vacation Bible School	<b>4</b> <b>9:00 AM - 12:00</b> <b>PM</b> Vacation Bible School <b>10:00 AM</b> Braille <b>1:00 PM - 3:00</b> <b>PM</b> Quilting (P) <b>8:00 PM - 10:00</b> <b>PM</b> Bethlehem Basketball (G)	<b>5</b> <b>9:00 AM - 12:00</b> <b>PM</b> Vacation Bible School	<b>6</b> <b>7:15 AM - 9:00 AM</b> Men's ChristCare (P)
<b>7</b> <b>9:30 AM</b> Worship w/Communion <b>10:30 AM</b> "Inverted" Bible Study (FH)	<b>8</b>	<b>9</b> <b>7:30 PM</b> Church Council (P)	<b>10</b>	<b>11</b> <b>10:00 AM</b> Braille <b>1:00 PM - 3:00</b> <b>PM</b> Quilting (P) <b>8:00 PM - 10:00</b> <b>PM</b> Bethlehem Basketball (G)	<b>12</b>	<b>13</b> <b>7:15 AM - 9:00 AM</b> Men's ChristCare (P)
<b>14</b> <b>9:30 AM</b> Worship Service	<b>15</b>	<b>16</b>	<b>17</b>	<b>18</b> <b>10:00 AM</b> Braille <b>1:00 PM - 3:00</b> <b>PM</b> Quilting (P) <b>8:00 PM - 10:00</b> <b>PM</b> Bethlehem Basketball (G)	<b>19</b>	<b>20</b> <b>7:15 AM - 9:00 AM</b> Men's ChristCare (P)
<b>21</b> <b>9:30 AM</b> Worship w/Communion	<b>22</b>	<b>23</b>	<b>24</b>	<b>25</b> <b>10:00 AM</b> Braille <b>1:00 PM - 3:00</b> <b>PM</b> Quilting (P) <b>8:00 PM - 10:00</b> <b>PM</b> Bethlehem Basketball (G)	<b>26</b>	<b>27</b> <b>7:15 AM - 9:00 AM</b> Men's ChristCare (P)
<b>28</b> <b>9:30 AM</b> Worship Service	<b>29</b>	<b>30</b>	<b>31</b>	<b>1</b> <b>1:00 PM - 3:00</b> <b>PM</b> Quilting (P)	<b>2</b> <b>7:30 PM</b> Elder's Mtg. (P)	<b>3</b> <b>7:15 AM - 9:00 AM</b> Men's ChristCare (P)